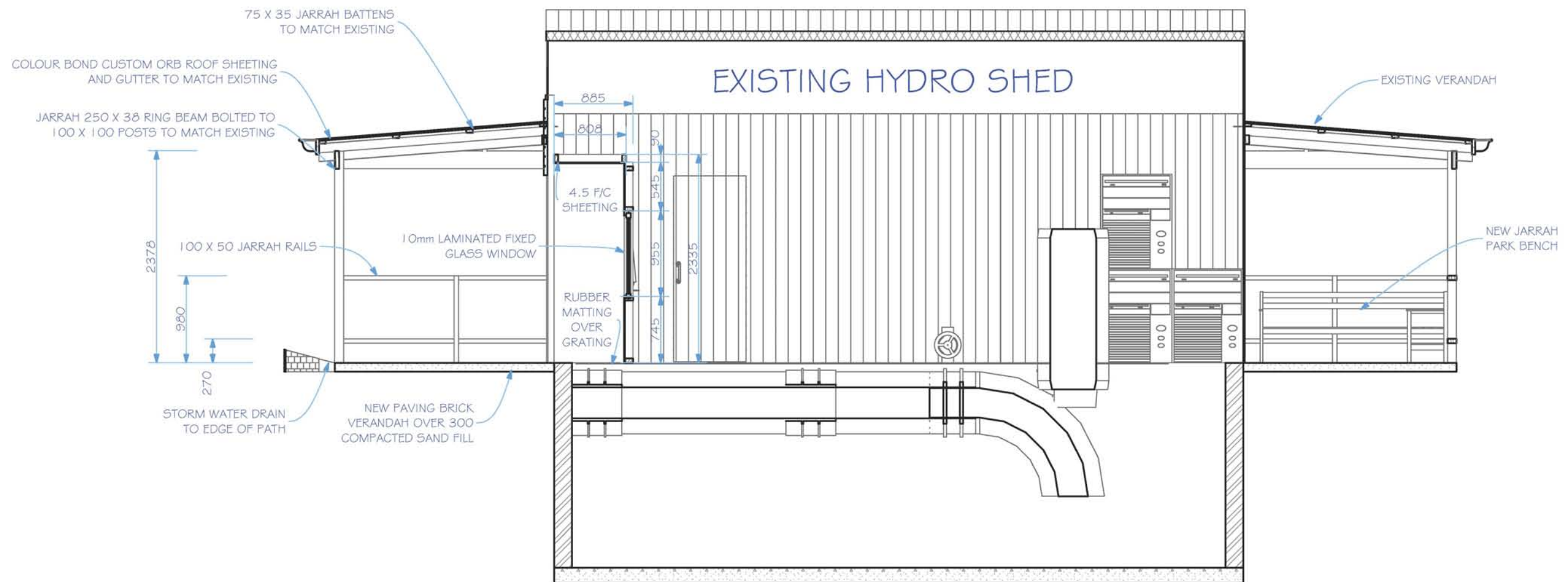


REVISION NOTE			
REV.	REVISION NOTE	DATE	BY

PROPOSED NEW VERANDAH



SECTION A. A.

1:50



19 Cross St, Bunbury WA 6230
 Ph: (08) 97 218 446
 design@birchdesign.com.au
 www.birchdesign.com.au

PROPOSED ADDITIONS TO PEMBERTON HYDRO

LEFROY BROOK PEMBERTON

No part of this drawing may be copied, modified or reproduced without permission from Birch Design.

Drawn: Jon Birch	Checked: AKB	Issued: 12/June/09	Revision: 6	Sheet: 10 of 10
---------------------	-----------------	-----------------------	----------------	--------------------